



Finchleys are proud to present this fantastic three bedroom apartment on the second floor of this purpose built block. The property boasts three double bedrooms, one with an en-suite shower/WC to the main bedroom, a family bathroom and a large open plan living area leading to a fully fitted kitchen.

Situated in prime location within a few minutes walk to shops and the underground station.

Available immediately, viewings highly recommended!

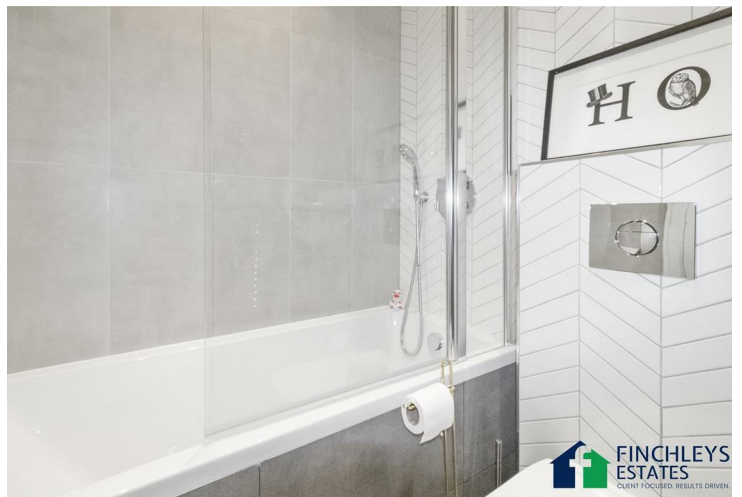
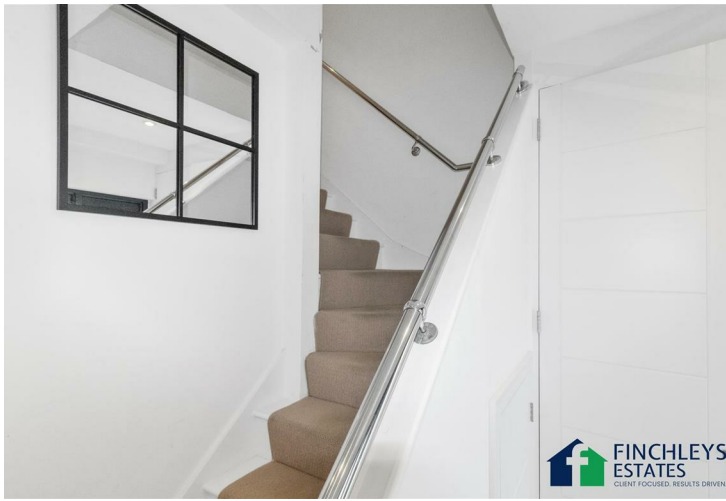
48 Neeld Crescent,
London, NW4

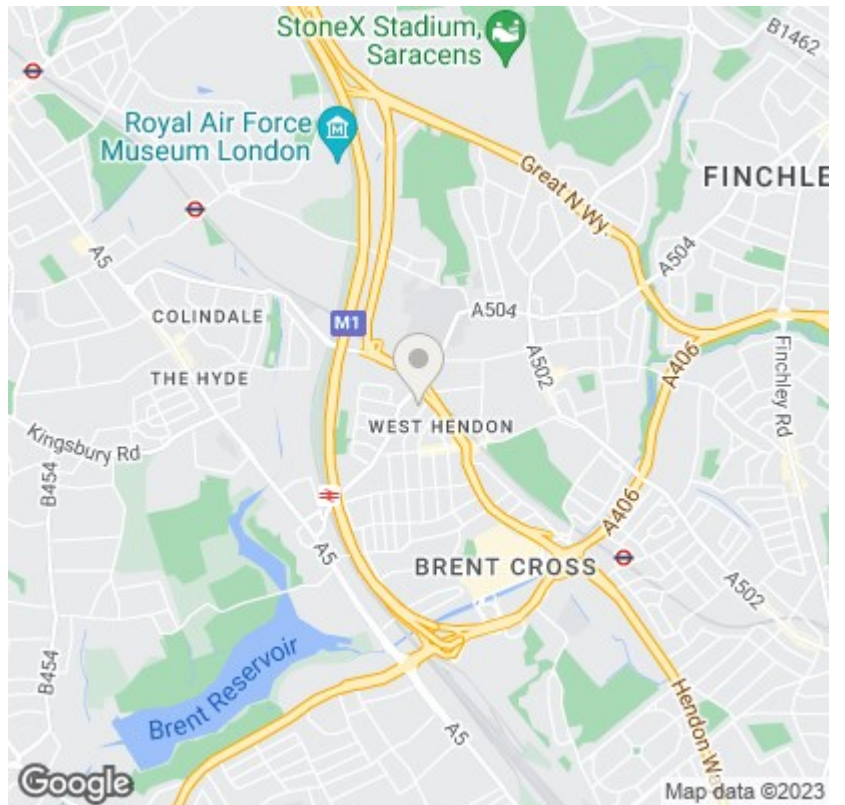
£2,100
Per Calendar
.. ..

3  2  1  C 



FINCHLEYS
ESTATES
CLIENT FOCUSED. RESULTS DRIVEN.





Neeld Crescent, NW4
Total Area: 82.4 sq metres approx.



Please note: Whilst every attempt has been made to ensure the accuracy of our floor plans please note that measurements are approximate and no responsibility is taken for any error, omission or misstatement. The floor plans we produce are for representation purposes only and should be used as such by any prospective purchaser. No guarantee is given on the total square footage of the property if quoted on our plans. Any figure given is for initial guidance only and should not be relied on as a basis for valuation purposes.



11 STATION ROAD
FINCHLEY
LONDON
N3 2SB
02083461180